

## » KBD25/30/35 G1 Feature

### Reliability & Safety >



#### New Earring Design

The earring design has a larger welding and stress surface, enhancing the structure's robustness and reliability.



#### Integrated Overhead Guard

The design features an integrated overhead guard with high-strength welding.

### Ergonomics >



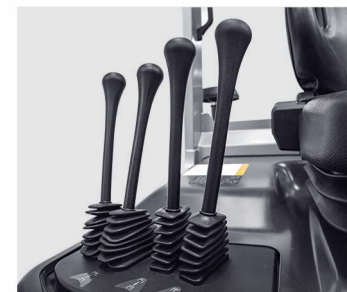
#### Comfortable Wrap-in Seat

An adjustable seat offering excellent shock-insulating properties.



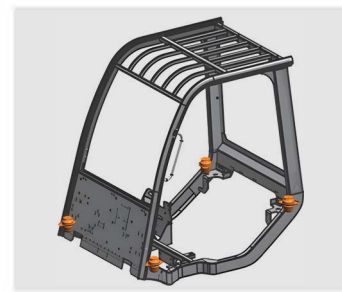
#### External Air Intake

Reduce noise for drivers' ears through external air intake.



#### Side Control Lever

The side control lever enables easy operation with high efficiency.



#### OHG with Soft Connection

Four silicone oil dampers connecting the overhead guard and chassis significantly reduces vibrations in the operator compartment.

### Maintenance >



#### Hook-on Mast Design

The hook-on mast design allows for easy assembly and disassembly.



#### Removable Side Panel

Removable side panels enable effortless observation, maintenance, and cleaning.



#### HD LCD Display with CAN Communication

The interface displays all necessary operator information, including working hours, service intervals and safety information, in an easy-to-read format.



#### Embedded iron floor

The iron floor can be disassembled without the need to remove the screws, simplifying the overall disassembly process.

A Brand of  
**KION**

*Baoli*

## KBD25/30/35 G1

Internal Combustion Forklift



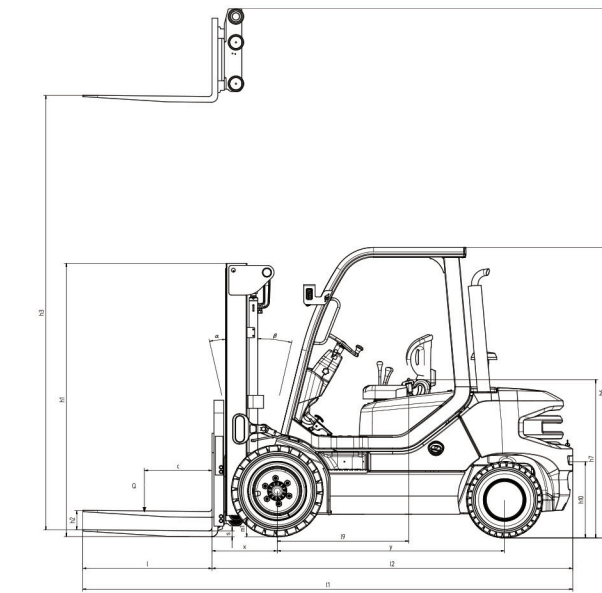
Linde Material Handling Pty Ltd  
Australian and New Zealand Network Coverage  
Tel: +(61) 2 9831 9500 or 1300 710 810  
Email: [contact@lindemh.com.au](mailto:contact@lindemh.com.au)  
[www.lindemh.com.au](http://www.lindemh.com.au) / [www.baoli-mh.com](http://www.baoli-mh.com)

## ➤ KBD25/30/35 G1 Technical Specifications

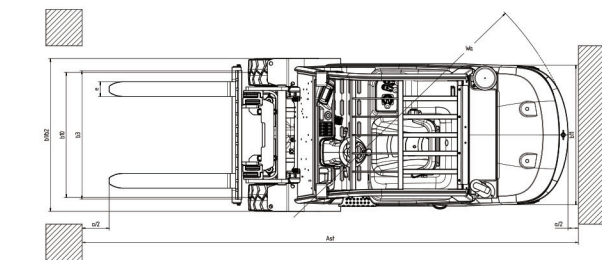
Distinguishing Mark	1.1	Manufacturer	KION-Baoli	KION-Baoli	KION-Baoli	
	1.2	Manufacturer's type designation	KBD25 G1	KBD30 G1	KBD35 G1	
	1.3	Drive: electric (battery type, mains, ...), diesel, petrol, fuel gas	diesel	diesel	diesel	
	1.4	Operator type: hand, pedestrian, standing, seated, order-picker	seated	seated	seated	
	1.5	Rated capacity/rated load	Q(t)	2.5	3	3.5
	1.6	Load centre distance	c(mm)	500	500	500
	1.8	Load distance, centre of drive axle to fork	x(mm)	504->494	504	509
	1.9	Wheelbase	y (mm)	1760	1760	1760
	Weight	2.1	Service weight	(kg)	4075	4510
2.2		Axle loading, laden front/rear	(kg)	5831/774	6594/916	7345/1075
2.3		Axle loading, unladen front/rear	(kg)	1905/2200	1883/2627	1848/3072
Tyres / Chassis	3.1	Tyres: solid rubber, superelastic, pneumatic, polyurethane	Zhongce-P	Zhongce-P	Zhongce-P	
	3.2	Tyre size, front	28x9-15NHS, 18PR	28x9-15NHS, 18PR	28x9-15NHS, 18PR	
	3.3	Tyre size, rear	6.5-10NHS,14PR	6.5-10NHS,14PR	6.5-10NHS,14PR	
	3.5	Wheels, number front/rear (x = driven wheels)	2x/2	2x/2	2x/2	
	3.6	Tread, front	b10 (mm)	995	995	995
	3.7	Tread, rear	b10 (mm)	953	953	953
	Dimensions	4.1	Tilt of mast/fork carriage forward/backward	α/β (°)	6/12°	6/12°
4.2		Height, mast lowered	h1(mm)	2146	2146	2146
4.3		Free lift	h2(mm)	150	150	150
4.4		Lift	h3(mm)	3000	3000	3000
4.5		Height, mast extended	h4(mm)	3715	3715	3715
4.7		Height of overhead guard (cabin)	h6(mm)	2231	2231	2231
4.8		Height of seat/stand-on platform	h7(mm)	1202	1202	1202
4.81		Distance front axle to SIP at middle seat position	h9(mm)	1018	1018	1018
4.12		Coupling height	h10(mm)	432	432	432
4.19		Overall length	l1(mm)	3780	3790	3870
4.20		Length to face of forks	l2(mm)	2780	2790	2870
4.21		Overall width	b1/b2(mm)	1265	1265	1265
4.22		Fork dimensions ISO 2331	s/e/l(mm)	45/100/1000	45/122/1000	50/150/1000
4.23		Fork carriage to ISO 2328, class/type A, B		2A	3A	3A
4.24		Fork-carriage width	b3(mm)	1040	1100	1100
4.31		Ground clearance, laden, below mast	m1(mm)	146	145	144
4.32		Ground clearance, centre of wheelbase	m2(mm)	163	161	159
4.33		Aisle width with pallet 1000 x 1200 across forks	Ast(mm)	4145	4145	4220
4.34		Aisle width with pallet 800 x 1200 along forks	Ast(mm)	4345	4345	4420
4.35		Turning radius	Wa(mm)	2440	2440	2510
4.36		Minimum pivoting point distance	b13(mm)	673.5	673.5	673.5
Performance data	5.1	Travel speed, laden/unladen	km/h	17.2/17.5	17.2/17.5	17.2/17.5
	5.2	Lift speed, laden/unladen	m/s	0.51/0.57	0.51/0.57	0.51/0.57
	5.3	Lowering speed, lade/unladen	m/s	0.40/0.45	0.40/0.45	0.40/0.45
	5.5	Drawbar pull, laden/unladen	N	16694/10489	16659/10978	16622/10687
	5.7	Gradeability, laden/unladen	%	26/26	22/25	20/22
	5.9	Acceleration time, laden/unladen	s	5.4/4.4	5.5/4.9	5.9/5.4
5.10	Service brake	M/H	M/H	M/H	M/H	
Combustion-engine	7.1	Engine manufacturer/type	Weichai WP3.2	Weichai WP3.2	Weichai WP3.2	
	7.2	Engine power according to ISO 1585	kW	36.8	36.8	36.8
	7.3	Rated speed	min-1	2300	2300	2300
	7.4	Number of cylinders/displacement	/cm3	4/3170	4/3170	4/3170
	7.10	Battery voltage/nominal capacity	(V)(Ah)	12V/80AH	12V/80AH	12V/80AH
Addition data	8.1	Type of drive unit	Mechanical transmission	Mechanical transmission	Mechanical transmission	
	10.1	Operating pressure for attachments	bar	165	185	206
	10.2	Oil volume for attachments	l/min	30	30	30
	10.4	Fuel tank, capacity	l	62.7	62.7	62.7
	10.7	Sound pressure level at the driver's seat	dB(A)	85	85	85

Subject to modification in the interests of progress, illustration and technical details not binding for actual constructions and may show the optional equipments.

## ➤ KBD25/30/35 G1 Mast Specifications



Safety distance a=200mm



KBD25 G1 Standard/Duplex mast

H [mm]	Q [kg]
6545	900
6045	1200
5545	1500
4845	1920
4345	2100
3845	2200
3345	2300
2845	2400
2345	2500
1845	2600
1345	2700
845	2800
345	2900
400	3000

KBD25 G1 Triplex mast

H [mm]	Q [kg]
900	810
1200	1000
1500	1250
1800	1500
2100	1680
2400	1830
2700	1950
3000	2060
3300	2160
3600	2250
3900	2340
4200	2430
4500	2520
4800	2610
5100	2700

KBD30 G1 Standard/Duplex mast

H [mm]	Q [kg]
6545	1000
6045	1360
5545	1720
4845	2230
4345	2340
3845	2450
3345	2560
2845	2670
2345	2780
1845	2890
1345	3000
845	3110
345	3220
400	3330

KBD30 G1 Triplex mast

H [mm]	Q [kg]
1000	910
1360	1130
1720	1410
2230	1860
2340	1960
2450	2060
2560	2160
2670	2260
2780	2360
2890	2460
3000	2560
3110	2660
3220	2760
3330	2860
3440	2960
3550	3060

KBD35 G1 Standard/Duplex mast

H [mm]	Q [kg]
6550	1100
6050	1530
5550	1970
4850	2400
4350	2580
3850	2760
3350	2940
2850	3120
2350	3300
1850	3480
1350	3660
850	3840
350	4020
400	4100

KBD35 G1 Triplex mast

H [mm]	Q [kg]
1100	910
1530	1180
1970	1540
2400	2010
2580	2150
2760	2290
2940	2430
3120	2570
3300	2710
3480	2850
3660	2990
3840	3130
4020	3270
4100	3350
4200	3450
4300	3550

## ➤ KBD25/30/35 G1 Mast Datasheet (in: mm)

Standard masts (mm)		KBD25/30/35 G1						
Lift height	h3	3000	3250	3500	4000	4500	5000	
Retracted height	h1	2137	2237	2437	2737	2987	3237	
Free lift (With LBR)	h2	150	150	150	150	150	150	
Free lift (Without LBR)	h2	150	150	150	150	150	150	
Height of overall at max. lift (With LBR)	h4	4045	4295	4545	5045	5545	6045	
Height of overall at max. lift (Without LBR)	h4	3715	3965	4215	4715	5215	5715	
Tilt of mast, forward/backward	a/b°	6/12	6/12	6/12	6/6	6/6	6/6	
Duplex masts (mm)		KBD25/30/35 G1						
Lift height	h3	3000	3300	3500	4000	4500		
Retracted height	h1	2102	2302	2402	2702	2952		
Free lift (With LBR)	h2	1053	1253	1353	1653	1903		
Free lift (Without LBR)	h2	1353	1553	1653	1953	2203		
Height, mast extended	h4	4045	4345	4545	5045	5545		
Height of overall at max. lift (Without LBR)	h4	3752	4052	4252	4752	5252		
Tilt of mast, forward/backward	a/b°	6/12	6/12	6/12	6/6	6/6		
Triplex masts (mm)		KBD25/30/35 G1						
Lift height	h3	4050	4350	4500	4650	5000	6000	
Retracted height	h1	2052	2152	2202	2202	2402	2902	
Free lift (With LBR)	h2	1003	1103	1153	1153	1353	1853	
Free lift (Without LBR)	h2	1303	1403	1453	1453	1653	2153	
Height, mast extended	h4	5095	5395	5545	5695	6045	7045	
Height of overall at max. lift (Without LBR)	h4	4802	5102	5252	5402	5752	6752	
Tilt of mast, forward/backward	a/b°	6/6	6/6	6/6	6/6	6/6	6/6	